

ROUND 1 EROAD AUSTRALIAN  
RALLY CHAMPIONSHIP



# ACCENT BENCHTOPS RALLY QUEENSLAND



## VOLUNTEER CAMPING GUIDE

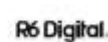
GYMPIE, QUEENSLAND

17-19 APRIL 2026

[RALLYQUEENSLAND.COM.AU](http://RALLYQUEENSLAND.COM.AU)



CHAMPIONSHIP SPONSORS



## Table of Contents

INTRODUCTION:.....	2
Albert Park Bowls Club (HQ/Command Centre/Equipment Store): .....	4
Albert Park Grandstand Area (Team Riff Raff & SSS volunteers) .....	5
Albert Park Sports Club Tarmac Area: .....	6
TELSTRA SERVICE PARK: .....	7
COOLOOLA BMX CLUB CAMPING: .....	7
PRIVATE CAMPING OPTIONS:.....	9
CAMPING AREAS CLOSE TO STAGES.....	10
AMAMMOOR CREEK & CEDAR GROVE CAMPING AREAS (Volunteers): .....	10
AMAMMOOR CREEK CAMPING GROUNDS:.....	11
CEDAR GROVE CAMPING GROUNDS: .....	11
KANDANGA CREEK HALL CAMPING (Volunteers): .....	12
WIDGEE SHOWGROUNDS CAMPING (Volunteers): .....	13
IMBIL SHOWGROUNDS & IMBIL CAMPING RETREAT (Volunteers): .....	14
IMBIL SHOWGROUNDS: .....	14
IMBIL CAMPING RETREAT: .....	15
THANK YOU .....	16

## INTRODUCTION:

Thank you for volunteering for the Accent Benchtops Rally Queensland 2026 event.

Below is some information to help you decide where it would be best for you to locate yourself for the event.

As you may be aware, ABRQ does NOT have access to the Gympie Showgrounds this year as there is a Horse Racing Carnival being held there on the same weekend. Additionally, the rally is taking place at the end of the Queensland school holidays AND accommodation options may be limited, so it's best to book your accommodation early. This also applies if you are wanting to camp close to the Stages.

No access to the Gympie Showgrounds means the Organisers have had to locate the Service Park to a new location in the Nelson Reserve Precinct right in the heart of the Gympie CBD (see map below):



This change of venue brings with it some terrific opportunities and positives, one being its proximity and access to shops, fuel, restaurants and other services, as well as being right beside the planned Super Special Stage (Street Stage). The extended Wheels on Mary festival is just a block away with many stores in Mary St open and ready for business.

Whilst camping isn't allowed in the Telstra Service Park due to Council by-laws we have fantastic facilities at the Cooloola BMX Precinct.

**Please NOTE:** There are a variety of fuel outlets and eateries within the Gympie region with two major Shopping complexes just minutes away from the 2026 Telstra Service Park.

Whichever options you choose, please note that there will be very limited access to power and water in most camping locations mentioned in this document.

It is strongly recommended that you plan to be as self-sufficient as possible.

**Lastly, most stages in 2026 are being run in the opposite direction as taken in 2025, so please consider this in your planning.**



## Albert Park Bowls Club (HQ/Command Centre/Equipment Store):

The Event HQ and Command Centre will be located at the Albert Park Bowls Club within easy walking distance of the Service Park (approx. 400m). Entry to HQ will be via the front door only. This is where all Event Administration for Competitors will be processed, and where the Command Centre/Rally Base will operate from.

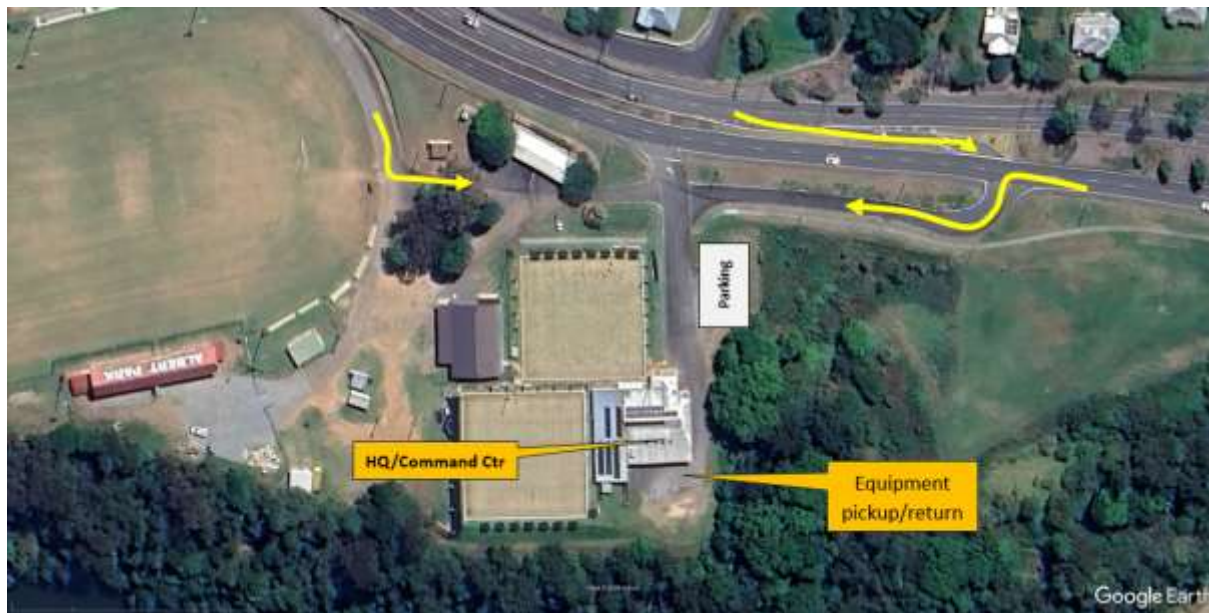


At the rear of this building is where our Equipment Store will be situated. Officials will have vehicular access to this area when collecting and returning equipment.

Camping at this location will be available from Tuesday 14<sup>th</sup> April to Monday 20 April **only to those Officials who are working directly in HQ, Command Centre and Equipment Store.**

The Albert Park Bowls Club Committee have kindly offered us the use of a single shower per gender & toilets within the building during certain hours; a schedule will be posted closer to the event but will generally align with the Command Centre operation times. Access to power and water for camping is not guaranteed. The communications tower will also be erected in this area and planning for this is underway. Security is not guaranteed.

**Please NOTE:** There are a variety of fuel outlets and eateries within the Gympie region with two major Shopping complexes just minutes away from HQ and the 2026 Service Park.



### Albert Park Grandstand Area (Team Riff Raff & SSS volunteers)

The Albert Park Grandstand area is adjacent to Albert Park Bowls Club (i.e. HQ) and is available only to those volunteers working within the Event Recovery Team and those specifically working on the Super Special Stage (Street Stage).



Construction/refurbishment of the Albert Park Grandstand is currently underway and Council has advised that this work SHOULD be completed prior to Rally dates. The Grandstand building houses toilets & showers.

Should the refurbishment not be completed, there are toilets in the area and showers available in the Albert Park Sports Club Tarmac Area (see next location).

There are a variety of fuel outlets and eateries within the Gympie region with two major Shopping complexes just minutes away from this location.



Volunteers will be able to camp here from Wednesday 15<sup>th</sup> April.

**NOTE:**

1. Please allow access to the grey sheds located in the top middle of the screenshot as these are used by various local sporting groups
2. This space has NO power or water - volunteers will need to be as self-sufficient as possible.
3. Security is not guaranteed.

### Albert Park Sports Club Tarmac Area:

The area is located within the Albert Park Sports Grounds.



This area is located on the tarmac parking space on the north-western outer perimeter of the football grounds and is offered to volunteer officials only, specifically volunteers working in the Service Park & the Super Special Stage.

The area is best suited to caravans and motorhomes though there are some spaces for tents. The hardstand area is mostly tarmac so no tent pegs can be driven into the ground.

Again, there is no power or water available in this area but there are good toilet & shower facilities available.

There are a variety of fuel outlets and eateries within the Gympie region with two major Shopping complexes just minutes away from this location.

Volunteers will be able to camp here from Wednesday 15<sup>th</sup> April.

**NOTE:**

1. This space has NO power or water - volunteers will need to be as self-sufficient as possible.
2. Security is not guaranteed.

## TELSTRA SERVICE PARK:

Gympie Regional Council By-Laws & guidelines do not permit camping in Nelson Reserve.

## COOLOOLA BMX CLUB CAMPING:

This area has good access to the local shops & eateries.

The Cooloola BMX facility will be shared by Volunteer Officials & Competitors and is conveniently located less than 4 kilometres from the entry to the Service Park.



Most of the available area is relatively level and offers a good location that is semi-rural and away from major road traffic noise.



The Cooloola BMX precinct has a brand-new amenity block and canteen.



The Event Organisers are also planning additional portable toilets and garbage bins to be installed in the area.

For campers using this area, access to the Old Bruce Highway is “just down the road” and therefore convenient for those early morning trips out to the service park, stages and spectator points.

The Cooloola BMX Club will be managing the camp area and there will be a fee of \$30.00 per site for the duration of your stay.

A site may consist of a single car & caravan OR a motorhome OR a tent of reasonable size. A combination of these will constitute multiple sites.

The Cooloola BMX Club will be offering limited catering on the weekend. More on this to come.

There are two camping areas being opened for use with the Main Camping Area being opened first and then when space is exhausted, the second area will be opened.





**All proceeds for camping will be paid directly to the Cooloola BMX Club.**

Bookings for camping **MUST** be processed through the Cooloola BMX Club bookings page when it becomes available. The Event Organisers will advise when bookings are open.

Contact details for the Cooloola BMX Club are available on request to the Officials Coordinator [rq.officials@rallyqueensland.com.au](mailto:rq.officials@rallyqueensland.com.au)

While the camp site is being managed by the Cooloola BMX Club, camp sites will not be marked out so we do ask that campers be considerate of other campers of this area giving reasonable thought to the space you use and the positioning of your camp site.

**NOTE:**

1. This space has NO power or water - campers will need to be as self-sufficient as possible.
2. Security is not guaranteed.
3. You are welcome to utilise the BMX track however use of the track guidelines advise, **Push Bikes only** and no skateboards, scooters, E-scooters, E-bikes or remote-controlled cars are permitted, as they can damage the track.

## PRIVATE CAMPING OPTIONS:

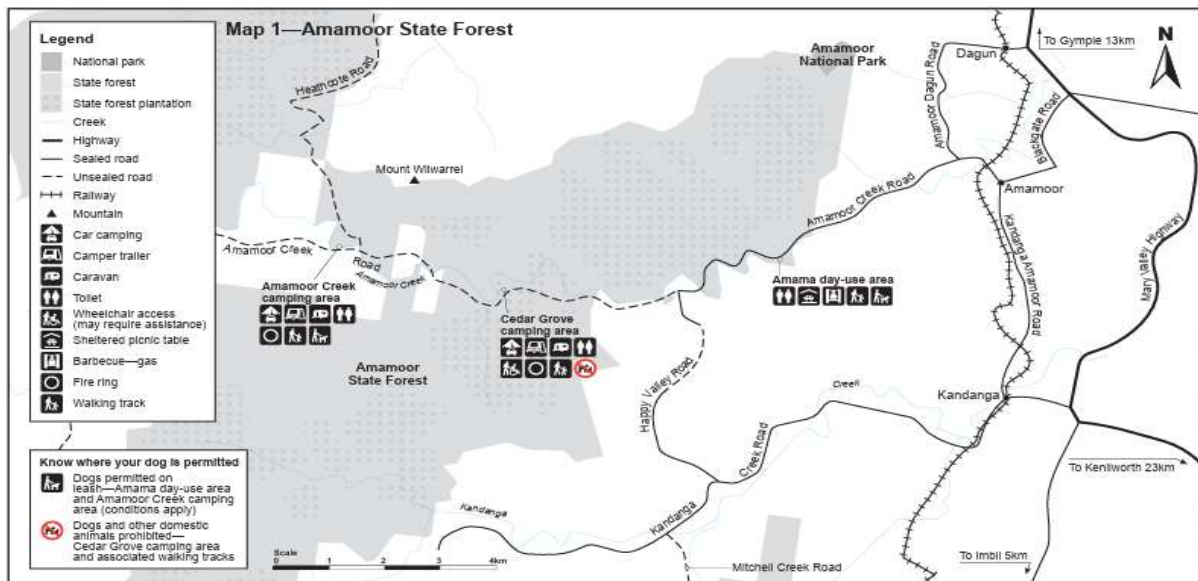
We have received offers of private camping options being made available to us within close proximity of Gympie CBD. Access to these options will be made available by contact the events Officials Coordinator: [rq.officials@rallyqueensland.com.au](mailto:rq.officials@rallyqueensland.com.au). These camping opportunities are a private arrangement between volunteer officials and provider.

## CAMPING AREAS CLOSE TO STAGES

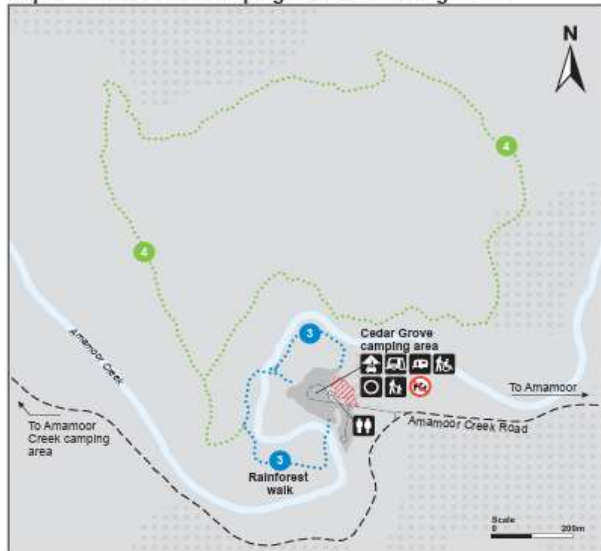
### AMAMOOR CREEK & CEDAR GROVE CAMPING AREAS (Volunteers):

These grounds are under the management of the Queensland National Parks and **bookings will be required (early) to save a space due to School Holidays.**

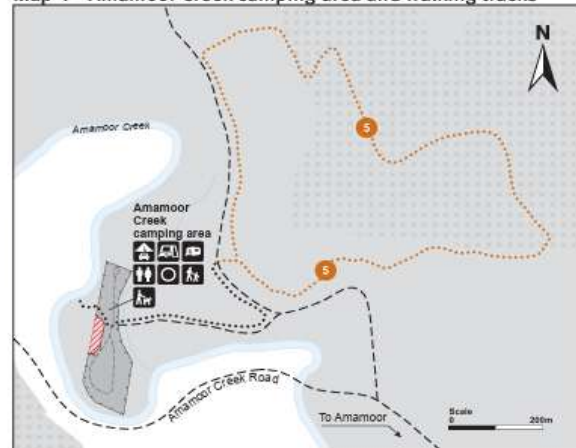
These camping grounds are situated near the start of the Heathcote Stage near the entry to the Gympie Music Muster. The “COLBURN” stage STOP is just a short drive down Amamoor Creek Road, so these locations serve well for the “HEATHCOTE” & “COLBURN” Stages.



Map 3—Cedar Grove camping area and walking tracks



Map 4—Amamoor Creek camping area and walking tracks





## AMAMOOR CREEK CAMPING GROUNDS:

This site is adjacent to the “HEATHCOTE” stage START & TIME controls. Getting here can be via the HEATHCOTE stage when not closed through Langshaw along Eel Creek Road from Gympie OR Amamoor Creek Road from Amamoor. Most of the roads are sealed until you reach either Langshaw or Amamoor however both are very well maintained and suitable to 2WD vehicles.

Description: Camp in an open grassy camping area in tall open forest featuring iron bark and blue gum. Camp sites are suitable for tent camping beside your car; caravans; camper trailers; campervans; motorhomes; buses; large groups. Water is available but is unsuitable for drinking without treatment as it is pumped from the creek; toilets; individual fire rings (bring your own clean-milled firewood); walking tracks. Open fires are permitted (except when fire bans apply) and only in fire rings provided. Fuel stoves are recommended. **Mobile phone coverage is not available**—the nearest reliable reception is at Amama day-use area.

Dogs are permitted to stay overnight. [Know where dogs are permitted and access conditions.](#)

For further information, click on the link below:

<https://book.parks.qld.gov.au/amamoor-creek-camping-area#/accom/145105>

## CEDAR GROVE CAMPING GROUNDS:

This site is along Amamoor Creek Road before you reach the END of the “COLBURN” Stage and a short 4k further to the START of the “HEATHCOTE” stage.

Getting here can be via Amamoor Creek Road from Amamoor. The road (Amamoor Creek Road) is sealed for some time after the Amamoor village but is then a very well-maintained unsealed road.

Description: The open grassy area amongst red cedar and bunya pines is the perfect camping spot and a great base for your Amamoor adventure. Camp sites are suitable for tent camping beside your car; caravans; camper trailers; campervans; motorhomes; large groups. Water is available but is unsuitable for drinking without treatment as it is pumped from the creek. Open fires are permitted (except when fire bans apply) and only in fire rings provided (bring your own clean-milled firewood). Fuel stoves are recommended. **Mobile phone coverage is not available**—the nearest reliable reception is at Amama day-use area.

**NOTE: Dogs are not permitted at Cedar Grove camping area.**

For further information, please click on the link below:

<https://book.parks.qld.gov.au/cedar-grove-camping-area#/accom/145180>

## KANDANGA CREEK HALL CAMPING (Volunteers):

This location on Sterling Road Kandanga Creek is directly opposite the **STOP Control** of the “Mitchell” Stage with the amenities (toilets) being made available to the competitors & stage team during competition.

Here there is an opportunity to camp conveniently “close” to the stage while enjoying a quiet and enjoyable country atmosphere. Available is the chance to camp outdoors in the fresh air or simply throw a swag on the floor of the hall. Also available inside are Tea & Coffee making facilities and an array of cutlery & crockery & the toilets are just outside in the amenities block (not sure about showers). We do ask that you clean up after yourselves as this is a community facility that is being made available to volunteers.

This location is best suited to FRIDAY 17th April & SATURDAY 18th<sup>th</sup> April **and is FREE to volunteers.**

Please note: This location is convenient for those working on the Mitchell stage with access to the stage available prior to the Road Closure times that will be published in the Course Car Schedule. This could also be an option for those working on the Colburn stage which is approximately 10 kilometres “up the road”.



## WIDGEE SHOWGROUNDS CAMPING (Volunteers):

This option places you in reasonable proximity the Saturday Stage of “HEATHCOTE” (previously known as MUSTER) and of the Sunday Stages of “GREENDALE”, “GLASTONBURY” & “GYMPIE GOLD”.

Conveniently located at the Widgee Showgrounds on the Upper Widgee Road (off the Gympie Woollooga Road) and a short walk or drive to the Widgee General Store.

**Camping is limited to 72 hours only. Pets are allowed, but not in the bar area.**

**NOTE: I expect that the 72 hour limit may be relaxed for the rally volunteers (Mal Bartolo)**

**A small fee is payable to the Showgrounds.**

For more information, please click on the link below.

<https://www.campsaustraliawide.com/camp-at-a-showground-with-a-bar-at-widgee-near-gympie-queensland/>

Commonly used by “Team Charlie” (Dave Martins teams), the site offers quiet country camping with ample available space for caravans & tent sites. Clean amenities are available and the volunteers open the bar & catering on Friday & Saturday nights.





## IMBIL SHOWGROUNDS & IMBIL CAMPING RETREAT (Volunteers):

These options place you in reasonable proximity the Saturday Stage of “WESTERN”.

Conveniently located in the Imbil township, both facilities offer you a short walk or drive to the Imbil town village where there is an array of eateries & the new IGA Store.

### IMBIL SHOWGROUNDS:

This campground is a Showground or Recreation Ground with basic facilities.

Many showgrounds offer affordable and convenient locations to camp, especially for larger RV's. It is always best to check their web site or call ahead to avoid disappointment.

**FEES & BOOKINGS:** Fees are \$15/night unpowered and \$20/night with power

For more information, please click on the link below.

<https://directory.fullrangecamping.com.au/item/imbil-showgrounds-cg/>



## IMBIL CAMPING RETREAT:

This unique Camping Retreat is family friendly and offers 12 acres of shaded parklands ranging from secluded areas to open spaces for larger groups. Pets are welcome.

Facilities at Imbil Camping Retreat include free flowing unpowered sites and structured powered sites, and amenities blocks with hot showers and toilets. The sheltered camp kitchen has picnic tables and free gas barbeques which makes a great central meeting place to relax with friends and family.

The owners believe that the Imbil township and Mary Valley is a special place and it is their pleasure to share their picturesque Imbil Camping Retreat with you.

For further information, please click on the link below:

<https://www.imbilcampingretreat.com.au/>

For pricing, please click on the link below:

<https://www.imbilcampingretreat.com.au/campsites-pricing>



## THANK YOU

*To our valued Volunteers, on behalf of the Brisbane Sporting Car Club and the Organising Committee, we extend our thanks and gratitude to you for giving up your time to support the Accent Benchtrop Rally Queensland event. Your efforts are appreciated, without you, such events could not be run.*

*Hope to see you soon.*

### *OTHER ACCOMMODATION OPTIONS*

If you're not into camping, there are a variety of accommodation options in the Gympie Region.

A reminder that booking accommodation early is recommended as Rally Queensland will be occurring at the end of the Queensland School Holidays AND there is another event being held in the area on the same weekend so accommodation options will be limited.

