



Officials Briefing

Inspirations Paint Capalaba Hinterland Rally Imbil

19th September 2020

Mary Valley Show
Society



OVERVIEW:

- QRC “blind” event comprising 10 stages.
- Zero contact model, no exchange of time cards
- Timing will be reported by the Results START & STOP radio operators on the SOS network.
- Separate areas for service, officials and HQ to promote distancing
- No camping. Catering for crews and officials by Mary Valley Show Society.
- Approximately 50+ Entries
- So far, the weather has been kind
- No Briefings, Ceremonial Start, Pre-start Staging Area & no Podium
- An early start and hopefully an early finish.



COVID19 Restrictions:

- On July 3rd the Queensland Government introduced new reduced level of restrictions.
 - All areas now governed by the 1 person per 4 sqm rule
 - Relax limits on service crews and entries
 - As problems continue, then so do the Queensland Government guidelines change



People attending are reminded of the basic measures we can all take to protect each other

6 steps to successful everyday hand washing

- 

Wet hands with water.
- 

Put soap on hands.
- 

Lather thoroughly, interlock and rub hands together.
- 

15-20 SECONDS
Continue to wash hands for 15-20 seconds.
- 

Rinse hands under water.
- 

Dry hands with paper towel.



STOP the spread of GERMS

- 

1 WASH your HANDS
- 

2 COVER your COUGH
- 

3 STAY HOME if you're sick

If you're concerned, visit your GP or call 13HEALTH (13 43 25 84).



keep COVIDSafe active at events

Motorsport Australia recommends downloading the COVIDSafe app and activating it at events.

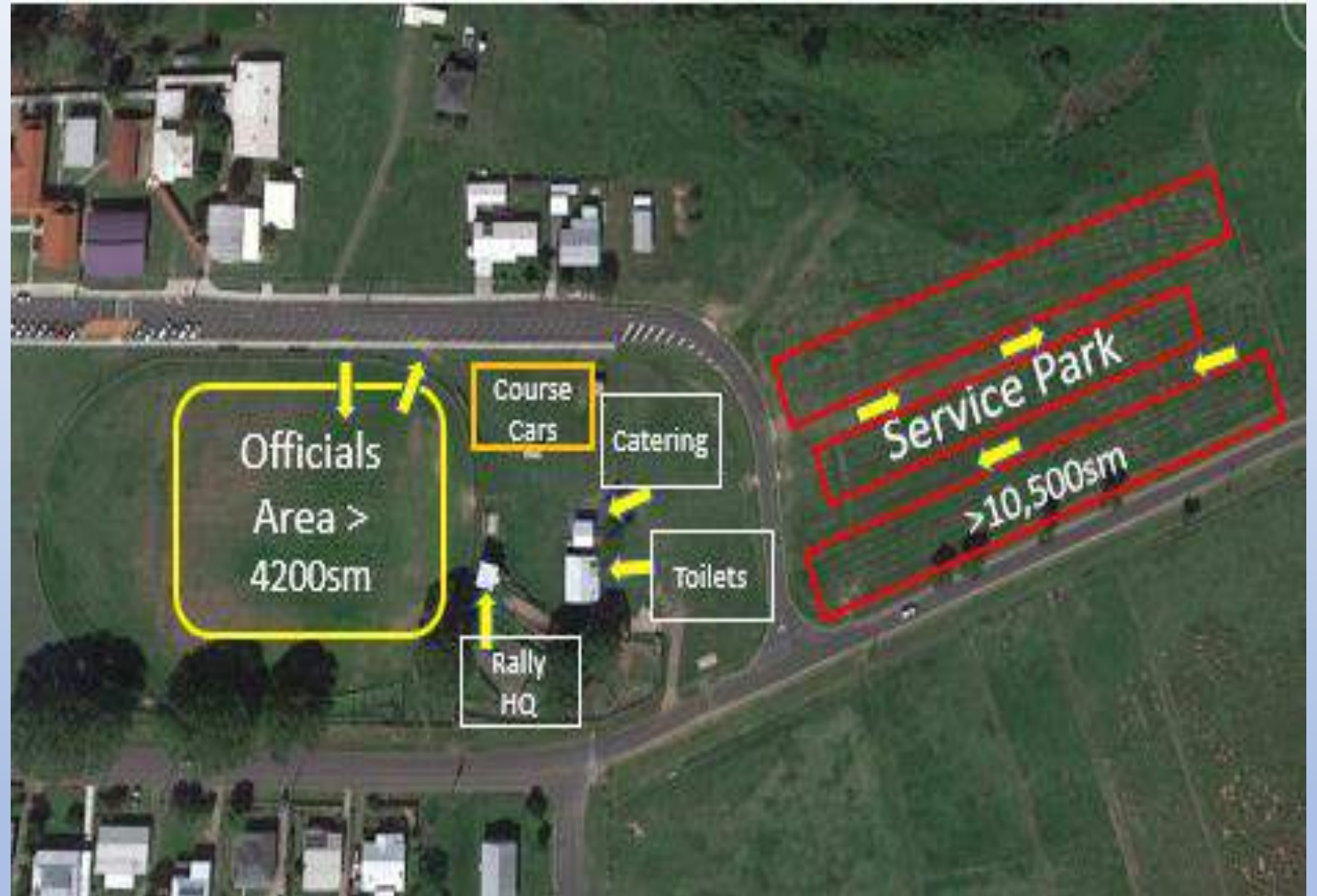
Keep yourself and your community safe by helping our health workers to notify you quickly if you've come in contact with someone who has Coronavirus

Keep up to date at: motorsport.org.au/covid19



Location Layout:

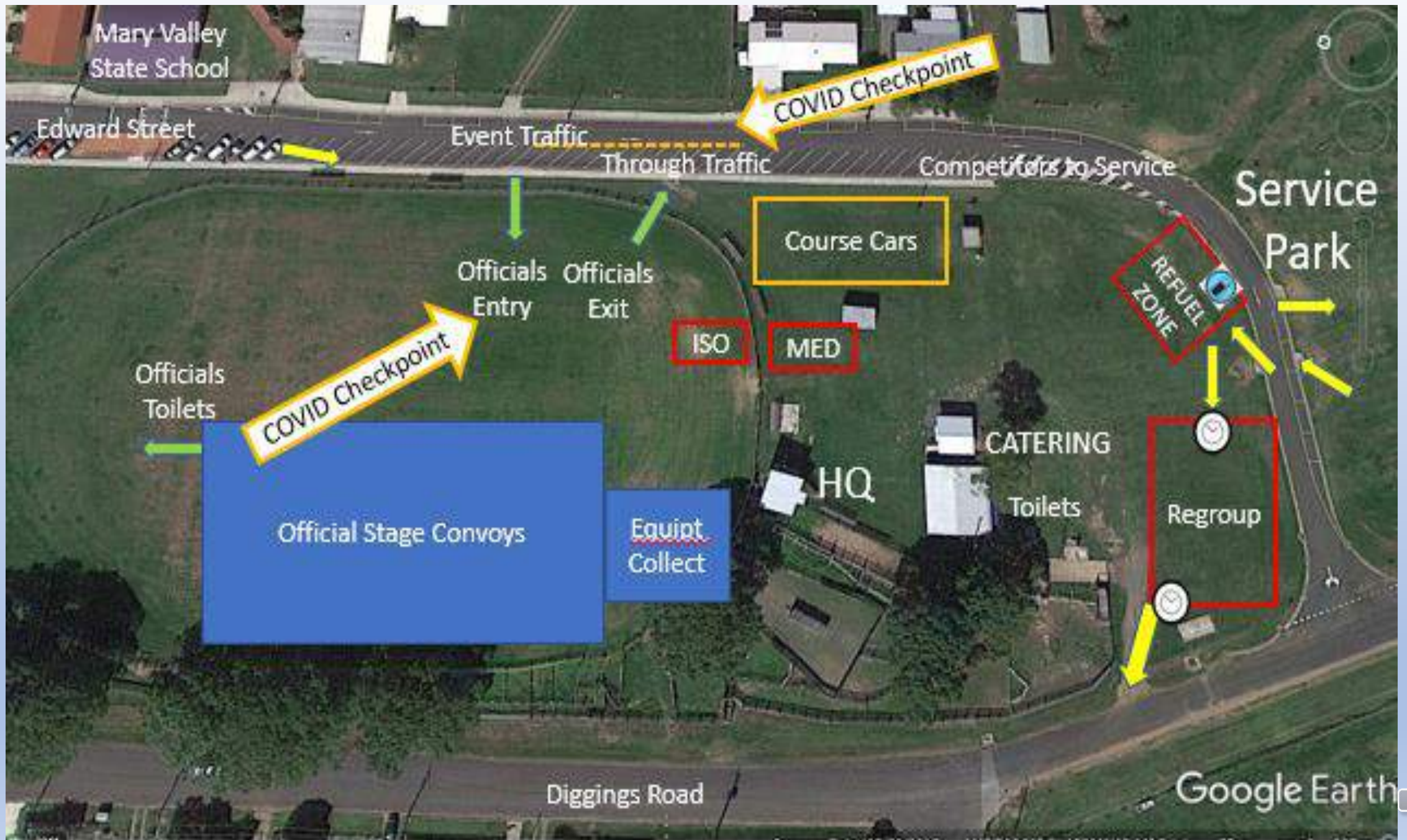
- Separate areas for Competitors & Officials
- Officials in arena



Officials Area:

- As you drive down Edward street, competitors will be directed into the left lane after the school, officials to the right and turn into the arena.
- Please remain in your car until checked by the COVID checker or assistant.
- Then proceed to the designated “lane” for your stage. Please remain in your stage area.
- Your Stage Commander will invite you one by one to collect your equipment & paperwork.
- Please install your club radio and perform a radio check.
- A hot breakfast will be provided & delivered near your equipment collection point.
- Convoys to commence departure from 7:45am
- We are aiming for completion by approx. 7:00pm.





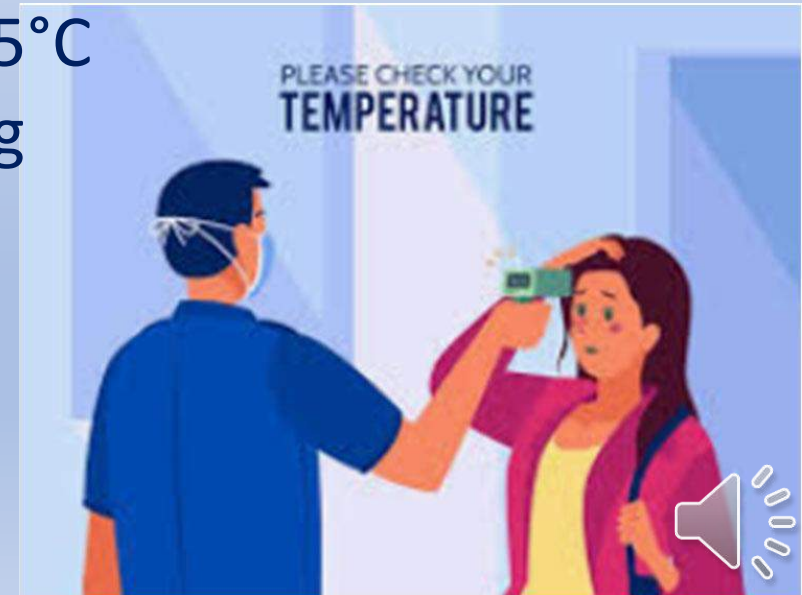
Covid-19 Compliance Checkers

- We are required to have compliance checkers to ensure we maintain hygiene, as well as tracking and tracing requirements.
- These were outlined earlier
- Your cooperation is expected and appreciated to make a difficult job easier



Controlling Entry to Locations:

- Locations are designated and a COVID checker will be on the entrance
- All attendees **MUST** be pre-registered, and will be asked if they have:
 - I. Had any Covid-19 or Flu like symptoms?
 - II. Been in contact with any confirmed/suspected COVID-19 cases
 - III. Travelled internationally or a COVID declared hotspot in last 14 days
- Will have temperature tested to ensure under 37.5°C
- Have contact details checked, and kept for tracking
- Anyone not meeting criteria will be refused entry
- Wrist bands issued to confirm compliance



Event Timing:

- i. We will run a zero contact model for timing with NO exchange of time cards
- ii. Upon arrival at the Time Control, officials will hold up the book in time. This is to be acknowledged by the codriver and written on the time card in the relevant 'TC X' section.
- iii. Provisional start time will be allocated by officials, to be written in the relevant provisional start section by the codriver. Card to be shown to the official confirming.
- iv. Competitors proceed to the start control. Control official will hold up the actual start time. This is to be acknowledged by the codriver and written on the time card in the relevant box.



Event Timing:

- v. Competitors then watch the clock and start at their allotted time.
- vi. At the stop control, FF time will be displayed by an official. Codriver to acknowledge and write on their time card, and show the official the completed card.
- vii. Officials to ensure that the SOS/tracking people see the whiteboard/s at Start and Stop locations.



Car No.

Timecard 1

Section 1
19 September 2020

Sample Timecard

TC 0 Imbil Showgrounds

Start Time Control will show you your start time on a White Board

COMPETITOR
R
1000

ACTUAL START TC0

H	M
---	---

TARGET TIME

00	33
----	----

DUE TIME

H	M
---	---

Competitor adds Actual Start & Target Time to work out due book in

TC 1

TC 1

Competitor moves into Control (Red Clock) on due Book in time.
 Official will show you your book in time on white board and competitor to write this here
 Then Official will give Competitor their Provision Start and Competitor writes this here

TC 1 SS 1 Woodland 1

FINISH TIME

H	M	S
---	---	---

COMPETITOR
R
1000

PROVISIONAL START

H	M
---	---

ACTUAL START

H	M
---	---

TARGET TIME

00	28
----	----

DUE TIME

H	M
---	---

Competitor moves down to Start Line
 Official will show Actual Start time on White Board and competitor writes that time here & then proceeds to start stage on this time via DIGITAL

At Stop Control - Official will show competitor their finish time and competitor write that time

TC 2

STOP

M	S
---	---

TC 2

Competitor then calculates their elapsed time - taking Actual Start from Finish

Process starts all over again - Competitor adds Actual Start Time & Target Time to work out their DUE time at next

TC 2

FINISH TIME

H	M	S
---	---	---

COMPETITOR
R
1000

PROVISIONAL START

H	M
---	---

ACTUAL START

H	M
---	---

TARGET TIME

00	24
----	----

DUE TIME

H	M
---	---

TC 3

STOP

M	S
---	---

TIME TAKEN

H	M
---	---

TC 3



SOS & Road Closures

- Road Blocks / Closures will be on **channel 1** and will only need to use the radio in the event of an incident.
- SOS (Results Start & Stop, SOS midfield) will be on **channel 3**.
- We will run a positive tracking model using “**Stage Call Cycles**” and will track all cars through all stages with info radioed back to Rally HQ. A separate document has been emailed to Officials working on the SOS network.
- Competitor results will be calculated from the times relayed from the Results Start & Stop officials.



Course Cars and Recovery

- We will use the usual course cars, Safety Car, 000, 00, 0 and Fast & Slow Sweep plus 5 Recovery vehicles
- Recovery, 000, 00 & Slow Sweep will be equipped with PPE kits to safeguard hygiene in cases of any interventions
- We will be running the course cars before each round however the Safety Car & 000 will not be traversing SS9 & SS10 due to time constraints
- SLOW SWEEP will collect Stage paperwork from all officials. This will be done in a “**No Contact**” manner with the Course Officials opening the back left side door of the Slow Sweep vehicle and dropping the document satchels into a plastic tub on the back seat.



Stage Closure:

- If you've attended a rally before, you'll know that there is a lot of work to set them up
- We ask that when the stages close down, you help us to “dismantle” the stage and assist with the return of equipment.
- We ask that you help remove the signage & bunting from your location to the next manned point. At this event, that should be no more than apprx 2.5k.
- We will have the Safety Car or 000 help escort you back to the Imbil Showgrounds
- Bunting will be disposed of in a bin, equipment placed in appropriate stacks.



Radios:

- The Command channel network will be **channel 1**. If you are on the command channel (Rally HQ, Stage Teams, Course cars, Recovery, MIV & Road Blocks etc) then you need to ensure your radio is tuned to channel 1 (NOT channel 11).
- The SOS channel network will be **channel 3**. If you are on the SOS network (SOS HQ, SOS Start, SOS midfield or SOS Stop, you will be on channel 3.
- SOS Tracking will be controlled by the SOS HQ operator and the process will involve **Stage Call Cycles**. Please refer to the separate document that has been emailed



Radio Testing:

- On installation and testing your radio with HQ, should you find that your radio is faulty, please replace it with another radio.
- Under no circumstances should you try to replace parts from another radio.
- When returning your faulty radio, please ensure it is returned to the equipment area but put aside to ensure it does not get redistributed
- Send an SMS message to the Officials Co-Ordinator specifying the number of the radio to 0407 757 622 so that it can be attended to post event.



Camping and Spectators

- We are not able to offer camping at the event this year. We realise many enjoy the social side, but that is a pleasure we must put off
- The Service Park is for competitors only and service bays will be allocated to competitors.
- Only designated Officials can enter the service park.
- We are unable to offer spectating, but we are working on ways to bring the experience to life through video and media.



Catering:

- Mary Valley Show Society will be catering from their canteen
- Wide counter to assist with social distancing
- Hand hygiene measures will be in place
- Limited menu provided, takeaway based
- Catering all day Saturday



Conclusion and Questions

- Remember the 3 golden rules, (1) **Be on Time**, (2) **Be on Time** & (3) **Be on Time**.
- We are living in changing times and seeing this on the news daily, we must change as required
- The event has been planned on our best expectations of allowable practices given current Government plans & guidelines
- Any changes will be notified ASAP as the Qld Government confirmed plans become available
- In the meantime, for any questions please contact the Clerk of Course

mbartolo55@gmail.com

0407 028 651

Thank you for your time & attention

